



# 2025 YEAR IN REVIEW











## Mission Statement

IPTAY provides resources to support the academic, athletic, and personal development of Clemson University student-athletes and the competitive success of Clemson Athletics.

## Vision Statement

IPTAY will be the model fundraising organization in intercollegiate athletics, providing unmatched support for student-athlete success and exemplary service to our donors.

## IPTAY Core Values

### STUDENT-ATHLETE SUCCESS

IPTAY will provide the resources necessary to afford Clemson student-athletes the best opportunity to excel academically, athletically, and personally.

### INTEGRITY

In all ways IPTAY will lead with honesty, trustworthiness, responsibility and ethical behavior, while complying with all national, conference and university regulations.

### TEAMWORK

IPTAY will be intentional and collaborative in all phases of our mission including IPTAY staff, investors, internal (coaches, university staff and board members) and external partners, student-athletes and stakeholders.

### TRANSPARENCY

IPTAY will effectively communicate the purpose and outcomes of consistent and fair policies that drive philanthropic support for Clemson Athletics.

### STEWARDSHIP

IPTAY will be trustworthy stewards of the contributions of our donors and volunteers, valuing and expressing appreciation for their time, talent, and resources while supporting all Clemson student-athletes.

## What We Support

### STUDENT-ATHLETE SCHOLARSHIPS

Each academic year, IPTAY has the responsibility of funding all student-athlete scholarships. IPTAY also provides the largest academic endowment (\$10.3M) on campus to the general student body.

### ATHLETICS FACILITIES

In order to place our coaches and student-athletes in the best position to succeed, it is important that we are able to provide them with both new and upgraded facilities. This enables our coaches to recruit and train the best and brightest young men and women at the highest level.

### ACADEMIC SUPPORT

The Nieri Family Student-Athlete Enrichment Center provides resources such as tutoring and mentors for all of our 575+ student-athletes so that they may succeed in the classroom.

**Other Areas We Support:** Student-Athletes Services (leadership development, community engagement, sports psychology, nutrition, strength & conditioning), Mascots, Tiger Band, and Cheer.



# IPTAY Annual Fund

22,268

IPTAY 2025 DONORS

\$45.3M

DOLLARS OF ANNUAL GIVING

8,445

NEW IPTAY DONORS

## Returning Donors vs. New Donors

	PAW \$60	PURPLE \$200	ORANGE \$450	CHAMPION \$900	TIGER \$1,700	HOWARD \$2,600	IPTAY \$3,500	JERVEY \$5,000	McFADDEN \$6,500	FIKE \$8,000	HEISMAN \$12,000	RIGGS \$25,000
RETURNING DONORS	1,509	1,852	1,485	1,712	1,677	888	1,444	962	676	722	1,029	127
NEW DONORS	1,192	6,180	443	127	99	19	24	10	21	21	35	14
TOTAL	2,701	8,032	1,928	1,839	1,776	907	1,468	972	697	743	1,064	141

## 2025 Donors By Youth Program



1,400



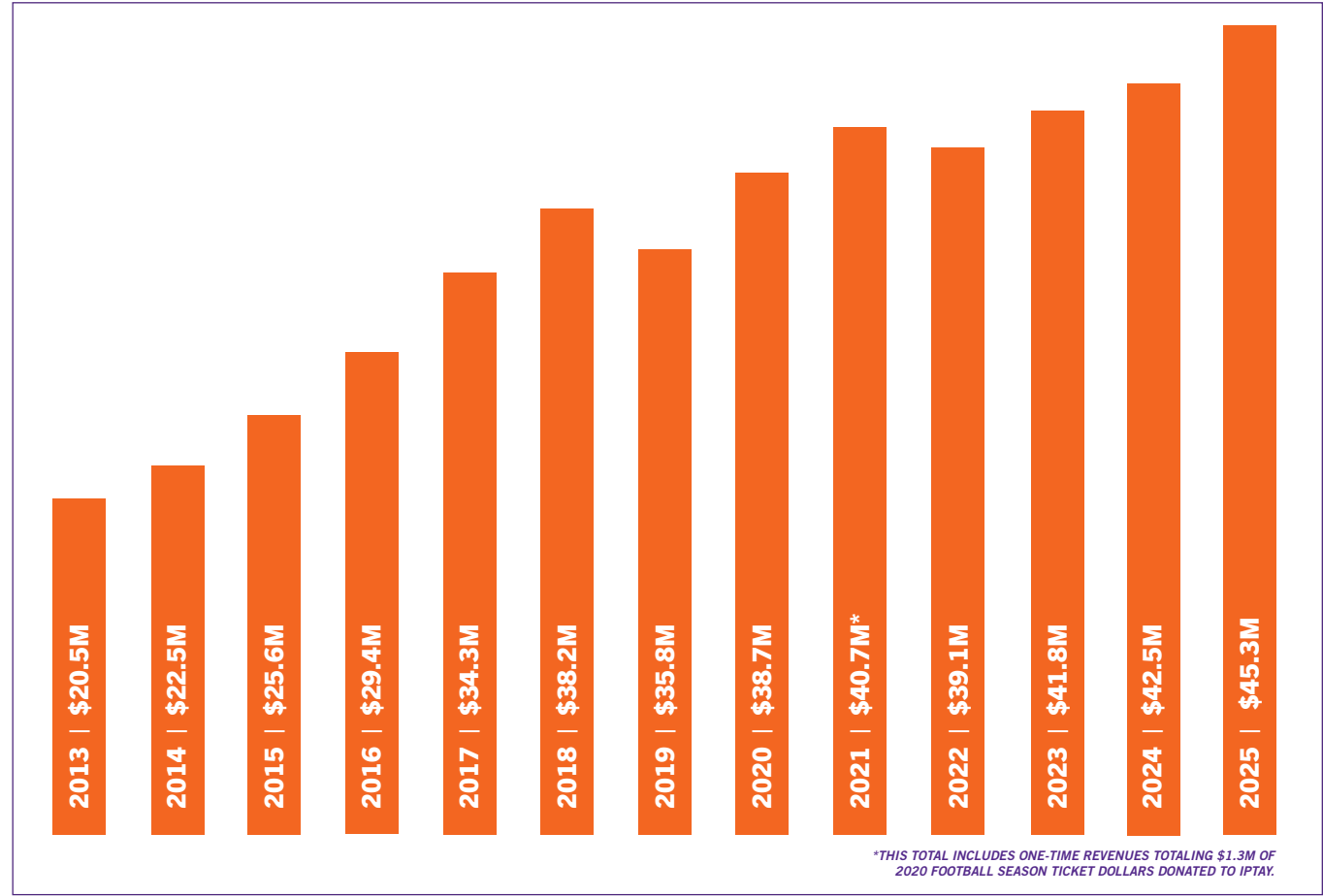
9,789



6,647

## 13 Year Annual Giving Trend

Total Annual Fund Dollars In Cash By Year





## IPTAY Major Gifts

**\$27.8M**  
DOLLARS OF MAJOR GIFTS

Clemson depends on the generosity and foresight of donors to build and maintain collegiate athletic excellence. Gifts that build an endowment and support major facilities and large-scale initiatives leave a lasting legacy and are vital to the future and the quality of athletics at Clemson. Major gifts may be in the form of cash, real estate, securities, gifts-in-kind and a number of other options.

## Cornerstone Partner Program



### Athletic Cornerstone Partners: By The Numbers

\$2.5M	\$2.8M	\$3.0M	\$3.3M	\$3.5M	\$12.5M
27 Gifts	2 Gifts	2 Gifts	1 Gift	1 Gift	1 Gift

**DONORS**  
**31**

**GIFTS**  
**35**

**TOTAL THROUGH FY 2025**  
**\$165.9M**

## IPTAY Planned Giving

**\$5.6M**  
DOLLARS OF PLANNED GIFTS

**IPTAY Legacy:** IPTAY Legacy is the guarantee that the priorities of IPTAY continue for years to come. These visionary gifts ensure that opportunities exist for future generations of student-athletes. These gifts continue long into the future, and many planned gifts are part of major gifts.

**Types Of Planned Giving:** Bequests, Gift of Retirement Assets, Life Insurance Policies, Bargain Sale Charitable Gift Annuities, Gift of Real Estate, and Charitable Remainder Trusts

## IPTAY Premium Seating

**\$9.3M**  
DOLLARS OF PREMIUM SEATING

## One-IPTAY

Total Dollars Raised By The "One-IPTAY" Enterprise In 2025



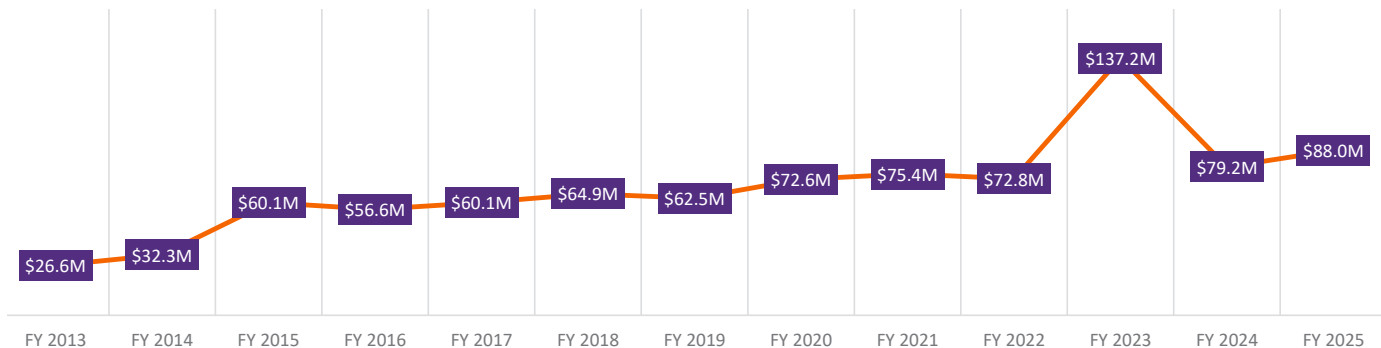
**\$88.09M**  
DOLLARS OF IPTAY TOTAL GIVING

## FY 2013 - FY 2025

Looking Back: One-IPTAY Enterprise Fundraising

FY 2013	FY 2014	FY 2015	FY 2016	FY 2017	FY 2018	FY 2019	FY 2020	FY 2021	FY 2022	FY 2023	FY 2024	FY 2025	TOTAL
\$26.6M	\$32.3M	\$60.1M	\$56.6M	\$60.1M	\$64.9M	\$62.5M	\$72.6M	\$75.4M	\$72.8M	\$137.2M**	\$79.2M	\$88.09M	\$888.3M

\*\*Largest gift in athletic history.





## Block C Club



**Block C Club:** Block C Club helps to enhance the lifelong experience of Clemson student-athletes. Block C Club has four main purposes as a part of its mission - to provide fellowship among all letterwinners, recognize and honor former student-athletes, provide outreach to letterwinners in an effort to re-engage them with Clemson University and to educate current coaches and student-athletes about the history of Clemson Athletics.

# 740

BLOCK C CLUB MEMBERS

## Hear Her Roar



**Elevating Women's Athletics At Clemson:** The Hear Her Roar initiative was launched in line with the 50th anniversary of the groundbreaking Title IX legislation in an effort to continue raising awareness and financial support for Clemson's women student-athletes. The momentum behind the growth of athletic opportunities for women at Clemson has never been more tremendous.

**50 Forward:** To celebrate the 50th Year of Women's Athletics at Clemson, the University set an ambitious fundraising goal of \$2.5 Million. This milestone aimed to honor the legacy and future of women's sports at Clemson. Through the dedication and generosity of IPTAY donors, the campaign surpassed expectations by raising an impressive \$3.3 Million. This total exceeded the original goal by \$800,000 marking a significant achievement for the anniversary celebration and the continued advancement of women's athletics at Clemson University.

# 206

HEAR HER ROAR DONORS

# \$3.6M

HEAR HER ROAR DOLLARS GIVEN

# \$13.2M

CUMULATIVE DOLLARS RAISED SINCE FY22

## Sport Specific Giving

**Support Your Sport:** All donors have the opportunity to make gifts that will directly impact a specific program and its student-athletes. In conjunction with IPTAY, coaches and athletic department administrators are able to identify needs for their respective programs and solicit support for those needs. Each year, sport-specific dollars raised through individual endowments and Support Your Sport initiatives help fuel each program and its annual operations. To learn more about a sport-specific gift, contact a member of the IPTAY Major Gifts team to make an impact on the sport of your choice.

## Athletic Facility Spotlight

**Watt Family Performance and Wellness Center:** Clemson officially opens the newest facility in the athletics district.

On April 4, 2025, IPTAY and Clemson Athletics celebrated the official opening of the Watt Family Performance & Wellness Center. Named in honor of the Cornerstone Gift made by the families of Steven & Pam and Michael & Kimberly Watt, this state-of-the-art 55,000 square-foot facility will have an immediate impact on hundreds of Clemson student-athletes and their respective programs.

After the ribbon cutting took place in early April, student-athletes began use of the space with the new weightroom and training area and sports medicine clinic. Additional services will continue to transition operations with full functionality of the renowned space beginning with the fall 2025 academic semester.

The Watt Family Performance & Wellness Center continues to reinforce Clemson's intentional commitment to offering an elite student-athlete experience, providing the young men and women who wear the Paw with cutting-edge resources and technology unmatched anywhere else in the country. Thanks to the unwavering generosity of the Watt Family, this new addition will revolutionize the training and wellness experience for student-athletes and is poised to set a new standard in collegiate sports facilities.

IPTAY and Clemson Athletics thank the Watt Family for their enduring support of Clemson University, and all that they have done and continue to do to make Clemson a special place. Their loyal generosity to the University, most recently shown through the Watt Family Performance & Wellness Center, will have a transformational impact on Tiger student-athletes and further propel Clemson into a future of sustained championship excellence.



## Impact Of Support

3

**ACC CHAMPIONSHIPS**  
Clemson Football, Softball,  
and Women's Track & Field  
won ACC Championships.

3.35

**RECORD GPA**  
Clemson student-athletes  
earned a record GPA of  
3.35 for the 2025 Spring  
Semester.

First-Ever

**NCAA TOURNAMENT**  
Clemson Lacrosse  
earned its first ever  
NCAA Tournament Bid.

BILES I

**BRIE CLARK**  
Brie Clark successfully  
compete and complete the  
Biles I on Floor.

## Campus Impact

9,789

**IPTAY COLLEGIATE  
CLUB MEMBERS**

25

**IPTAY STUDENT ADVISORY  
BOARD (ISAB) - COLLEGIATE  
CLUB RECRUITMENT**

86

**STUDENT-ATHLETES  
GRADUATED IN THE  
SPRING OF 2025**

43

**DIFFERENT DEGREES OF THE  
SPRING STUDENT-ATHLETE  
GRADUATES**

## Orange: The Experience

**ORANGE**  
THE EXPERIENCE



*Orange: The Experience* is a 64-page magazine published four times this past year. *Orange: The Experience* is packed with exclusive features on celebrating student-athlete success, showcasing Clemson's dedicated coaches, and many inspiring IPTAY donors. The magazine also portrays up-close and behind-the-scenes photography of various athletic facilities and sporting events. *Orange: The Experience* promises an immersive and enlightening read that resonates with Clemson alumni, fans, former student-athletes, and supporters alike.

*Orange: The Experience* has an accessible online presence through ClemsonPlus.com. With the ability to access *Orange: The Experience* anywhere, allows extend content to reach the greater Clemson audience. The magazine possess enriching stories and information on student-athletes, donors, and Clemson Athletics that can not be found anywhere else.



## New Giving Levels For IPTAY 2026

Beginning July 1, 2025, with the implementation of the recently passed legislation from the House settlement, the scholarship model is changing from scholarship limits to roster limits with no cap on student-athlete scholarships up to the roster limit. Each institution can decide how many scholarships to award up to the total number of roster spots for each sport. With this change, IPTAY and Clemson Athletics plan to be very aggressive in providing scholarships to our student-athletes.

IPTAY plans to invest in 150 new full scholarship opportunities through a phased approach, which will come at an approximate additional cost of \$6 million. These 150 new scholarships are in addition to the 270 scholarships already provided to student-athletes. These additional scholarships constitute a significant investment in our student-athletes and athletic programs, and IPTAY is committed to providing more student-athletes with scholarships. Below is a breakdown of Clemson Athletics' annual scholarship expense funded by IPTAY, as well as an expected growth in the total number of scholarships awarded to Clemson student-athletes.

## Increased Student-Athlete Scholarship Expense

### FY 2008 - 2027

FY 2008	FY 2009	FY 2010	FY 2011	FY 2012	FY 2013	FY 2014	FY 2015	FY 2016	FY 2017
\$6.3M	\$6.4M	\$6.8M	\$6.9M	\$7.2M	\$7.5M	\$8.6M	\$8.8M	\$10.7M	\$11.2M
FY 2018	FY 2019	FY 2020	FY 2021	FY 2022	FY 2023	FY 2024	FY 2025	FY 2026	FY 2027
\$11.3M	\$12M	\$12.2M	\$12.9M	\$12.9M	\$15.3M	\$17.5M	\$18.9M	\$22.4M*	\$23.2M*

*\*Projections*

## Growth In Scholarships Available For Clemson Student-Athletes

### FY 2025 - 2028

2025	2026	2027	2028
270	420*	430*	434*

*\*Projections*

The increases below are the first adjustments to the IPTAY annual levels since FY 2020 and went into effect July 1, 2025. These new membership donation amounts will be reflected in all membership materials and communications for the IPTAY 2026 year. Please note that these level increases have been approved and endorsed by the IPTAY Board of Directors, the IPTAY CEO and the Director of Athletics.

## New Giving Levels

Giving Level	IPTAY 2025	IPTAY 2026
Riggs	\$25,000	\$27,500
Heisman	\$12,000	\$13,500
Fike	\$8,000	\$9,000
McFadden	\$6,500	\$7,250
Jervy	\$5,000	\$5,500
IPTAY	\$3,500	\$4,000
Howard	\$2,600	\$2,900
Tiger	\$1,700	\$1,900
Champion	\$900	\$1,000
Orange	\$450	\$500
Purple	\$200	\$250
Paw	\$60	\$75

IPTAY donors across the state of South Carolina and across the country continue to be the backbone of our program. During a time of major growth within the University and intercollegiate athletics, private support is the key to continued success at the highest level. IPTAY truly is the power behind the Paw!



# IPTAY Staff

Supporting Clemson Student-Athletes Since 1934!



**DAVIS BABB**  
Chief Executive Officer



**RYAN BLANCHARD**  
Assistant Director of Development  
and Member Services



**ASHBY BURTON**  
Director of Strategic  
Communications



**JANICE CANTINIERI**  
Director of Donor Relations



**WESLEY CRIBB**  
Senior Associate Director of  
Finance & Business Operations



**LINDA DAVIS**  
Administrative Assistant



**AARON DUNHAM**  
Senior Associate Director of  
Major Gifts



**TREY FARMER**  
Assistant Director of Parking



**HAVEN FLESCH**  
Assistant Director of  
Premium Hospitality & Events



**TRAVIS FURBEE**  
Senior Associate Director  
of IPTAY



**LAUREN GAULIN**  
Director of Major Gifts



**KELLY GEIGER**  
Director of Collegiate  
& Pre-Collegiate Programs



**CONNIE GILREATH**  
Development Coordinator



**ELLIS JOHNSON**  
Director of Volunteer Engagement  
REP Program



**SAVANNAH KING**  
Director of Premium Hospitality  
& Donor Stewardship



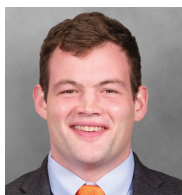
**REED KRAMER**  
Director of Annual Fund  
Membership & Engagement



**ALY LILLEY**  
Director of Business Operations



**ROBIN LAY**  
Accountant/Fiscal Analyst



**PATRICK MARSDEN**  
Director of Premium Seating



**ROBYN MASSEY**  
Administrative Specialist



**JOANNA NEAL**  
Executive Assistant



**NASH NEWBERRY**  
Associate Director of  
Development & Member Services



**ANDREW PATTERSON**  
Assistant Director of Development  
& Member Services



**TAYLOR SANDERFORD**  
Associate Director of  
Young Alumni



**KYLE SHIELDS**  
Director of Major Gifts



**MANDEE TESKE**  
Administrative Coordinator



**KELSEY TIBBS**  
Assistant Director of  
Design & Communication



**DREW WADDELL**  
Associate Director of  
Major Gifts



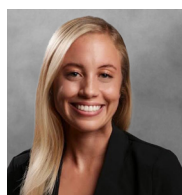
**TOM WADE**  
Associate Director of  
Major Gifts



**LOGAN WELCH**  
Director of Development  
& Member Services



**JASON WILSON**  
Associate Director of Parking &  
IPTAY REP Program



**ASHLEY WOOLFORD**  
Associate Director of Premium  
Hospitality & Events



## **IPTAY Board Of Directors**



**RETT RUTLAND**  
President - District IV Director



**BEN GRIFFITH**  
President Elect - District VI Director



**MIKE CRAPPS**  
Treasurer - District III Director



**JOHN WRIGHT, JR.**  
Secretary - District I Director



**DAVID BOYKIN**  
District VIII Director



**DEB CONKLIN**  
Alumni Association President



**DAN GARRISON**  
District X Director



**DR. ANTONIS KATSIYANNIS**  
Faculty Athletic Representative



**JOHN N. McCARTER JR.**  
Board of Trustee Representative



**BILL SMITH**  
Board of Trustee Representative



**RON SMITH**  
District II Director



**JAY SUTTON**  
District IX Director



**ROBIN WILSON**  
District VII Director



**ADAM WITTY**  
District V Director

## **IPTAY Past Presidents**



**MARY ANNE BIGGER**



**DR. JIM BOSTIC**



**CHARLES DALTON**



**EDDIE N. DALTON**



**FRED FAIRCLOTH**



**EDGAR C. McGEE**



**THURMON McLAMB**



**BILLY MILAM**



**BOB RIGGINS**



**DR. EDDIE ROBINSON**



**DR. JOHN TIMMERMAN**



**JOE TODD**









**SUPPORTING CLEMSON STUDENT-ATHLETES SINCE 1934!**

